

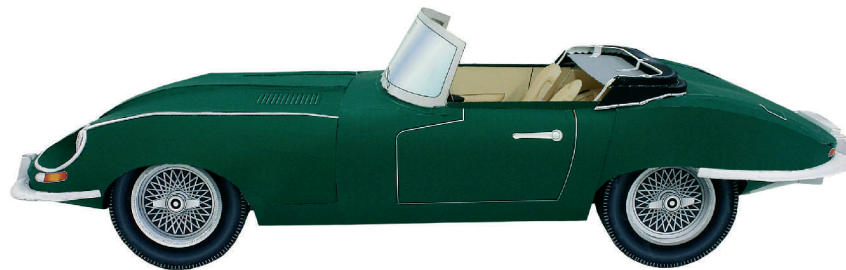
PAPER CRAFT

<http://www.canon.com/c-park/en/>

sheet-1



● View of complete model



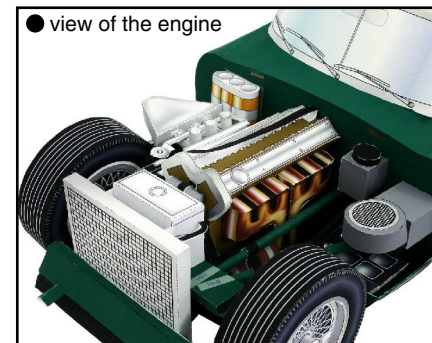
● View of complete model (Side view)



● View of complete model (Front view)



● View of complete model (Back view)



● view of the engine



● view of the cockpit

## JAGUAR E-TYPE

"Jaguar E-type" is one of the most well-known models produced by British sports car maker Jaguar, founded in 1922. This model was highly regarded at the Geneva International Motor Show in March 1961 for its low-set, streamlined appearance and state-of-the-art mechanics. Series 1, which first went on the market in 1961, sported an inline six-cylinder, 3.8 liter DOHC engine. In 1964, this was upgraded to a 4.2 liter. Various minor changes up until 1971 resulted in the twin-six engine of the Series 3. This model, known in the US as the XK-E, enjoyed high levels of popularity. Although the E-type disappeared from the market in 1975, its curved lines continued to influence designers, and it remained well-loved by car enthusiasts around the world. This Papercraft JAGUAR E-type is about one thirteen the size of the real car.

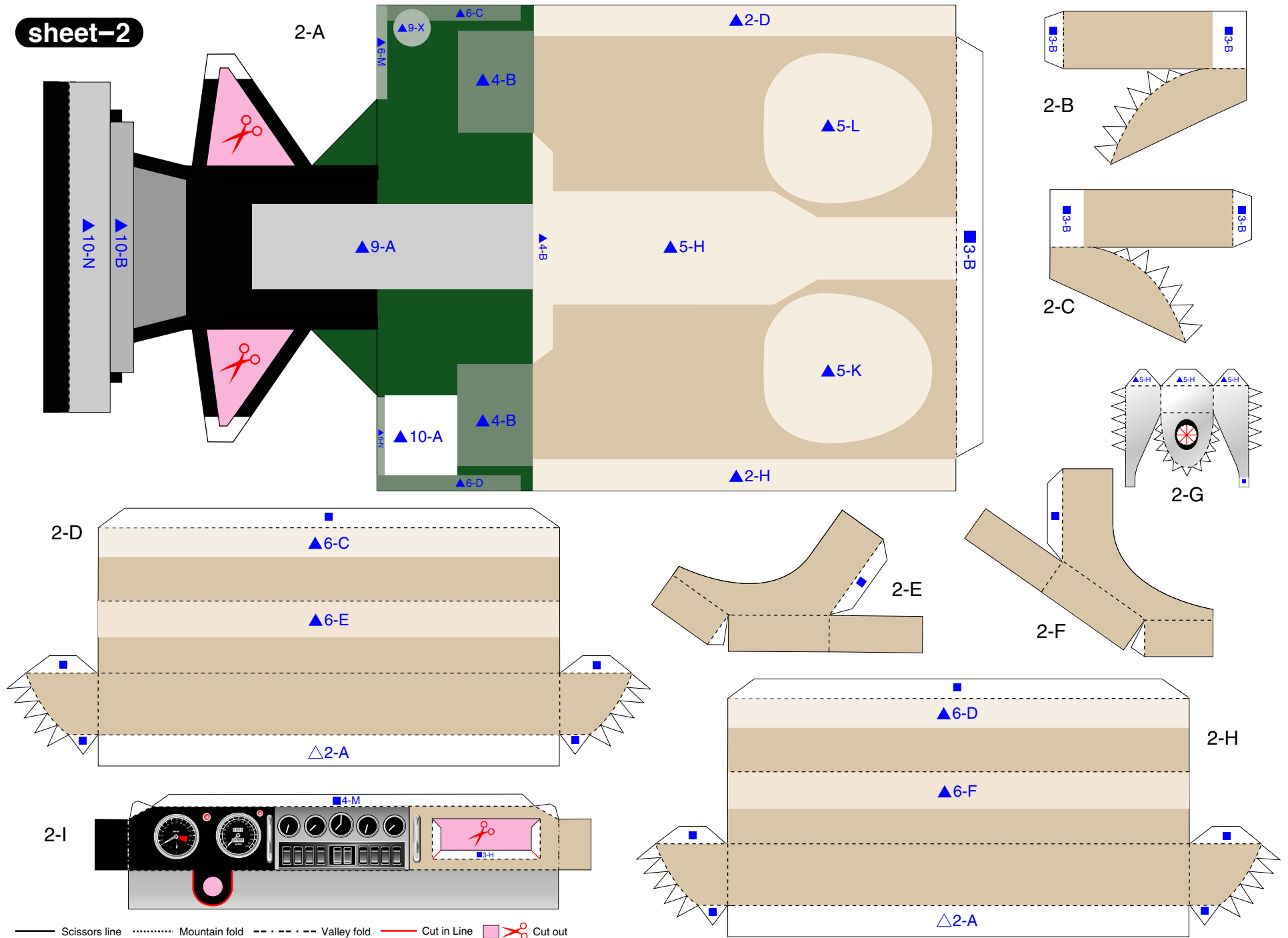
\*This model was designed for Papercraft and may differ from the original in some respects.

■ Parts list (Pattern) : Fifteen A4 sheets (No.1 ~ No.15)

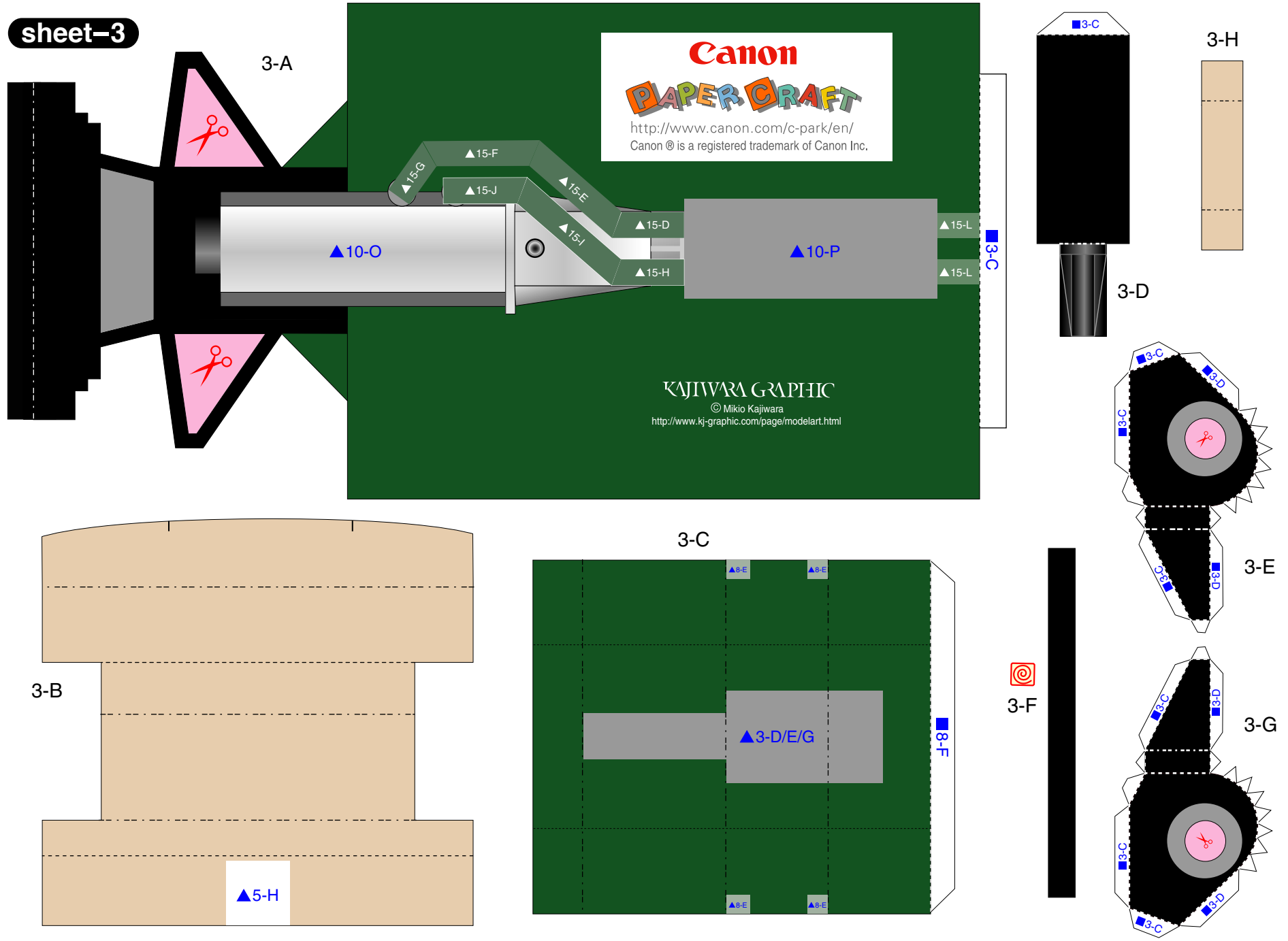
■ No. of Parts: 268

\*Build the model by carefully reading the Assembly Instructions, in the parts sheet page order.

**sheet-2**

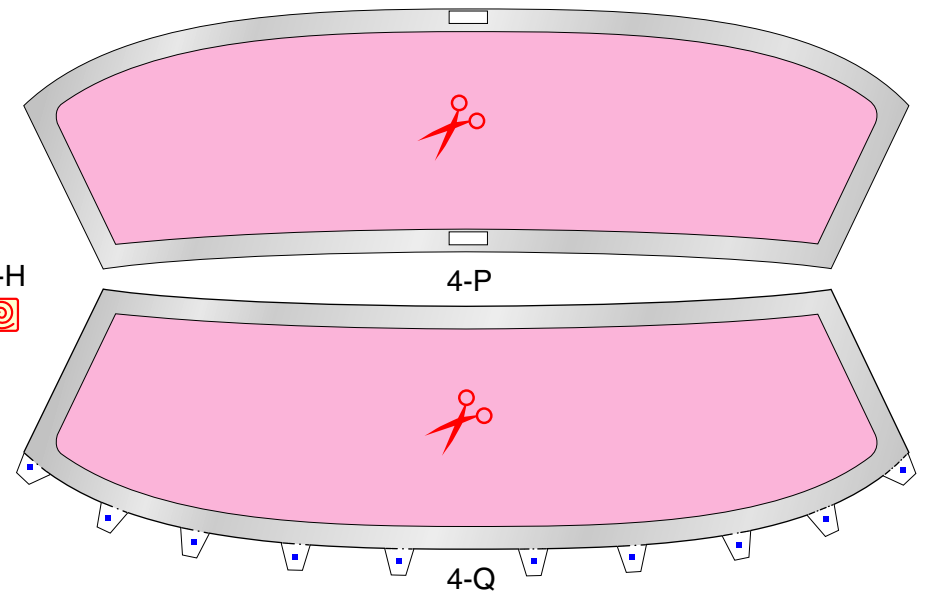
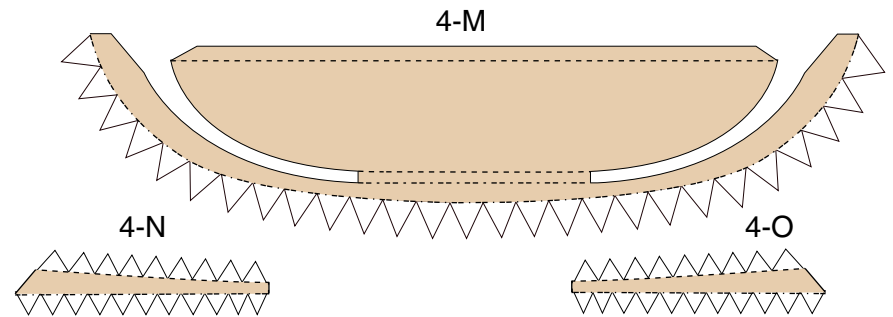
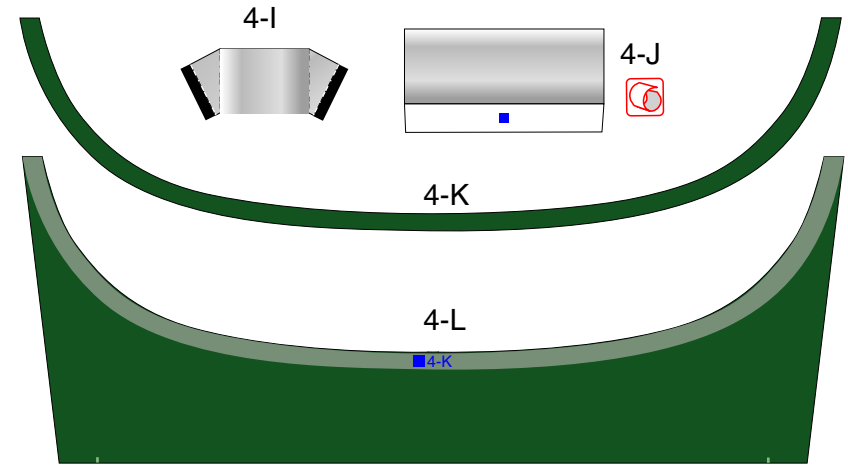
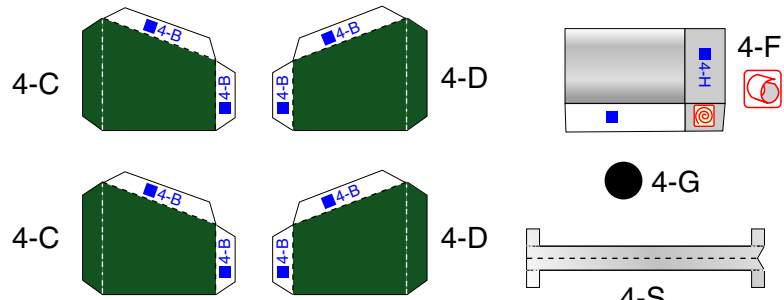
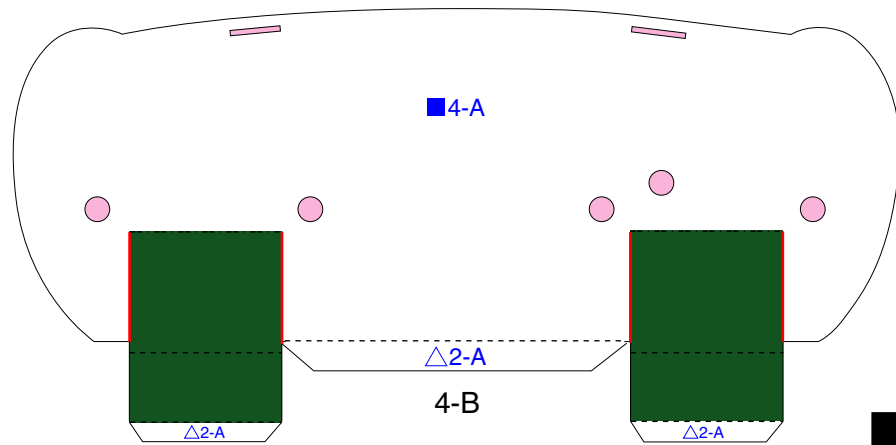
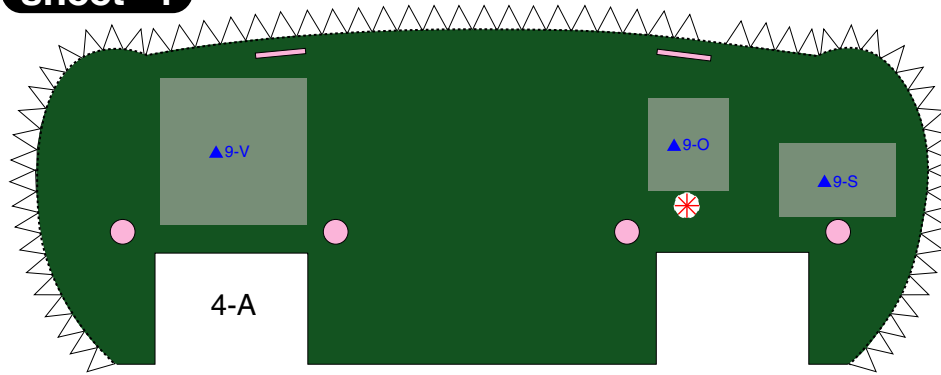


sheet-3



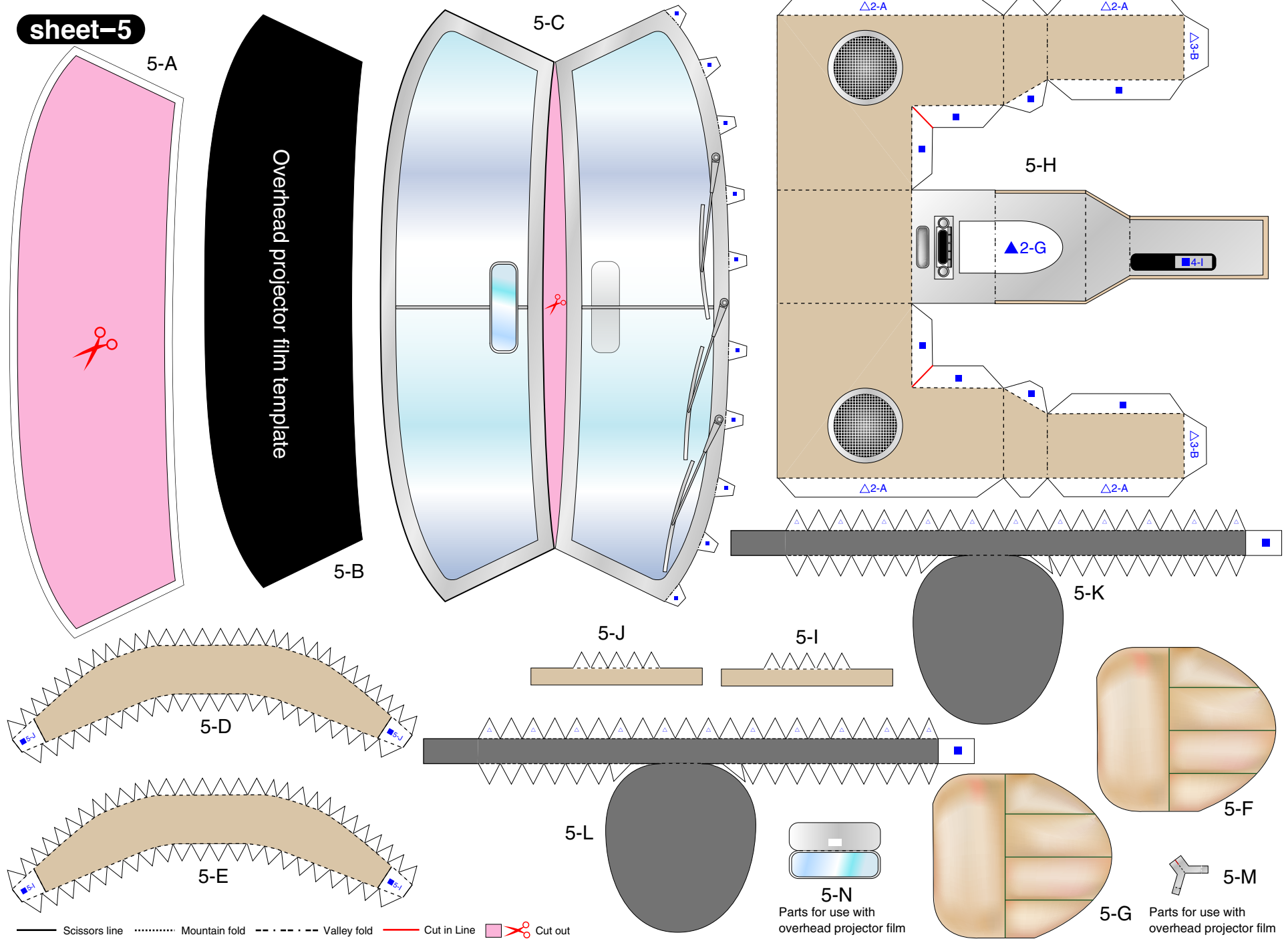
— Scissors line    ..... Mountain fold    - - - - - Valley fold    ——— Cut in Line    Cut out

**sheet-4**



— Scissors line    ..... Mountain fold    - - - - - Valley fold    — Cut in Line    ✂ Cut out

**sheet-5**

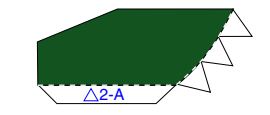
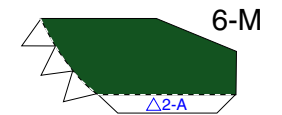
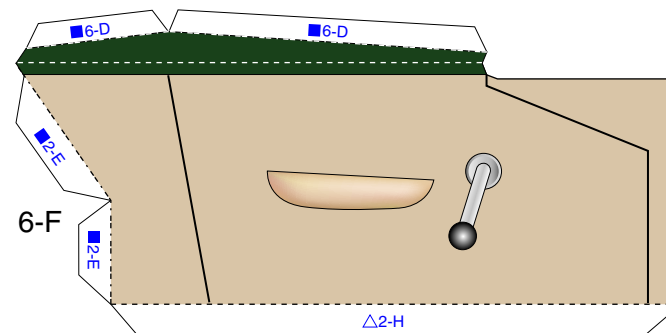
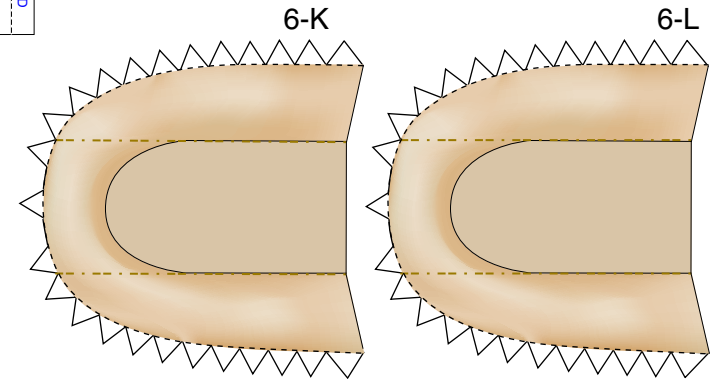
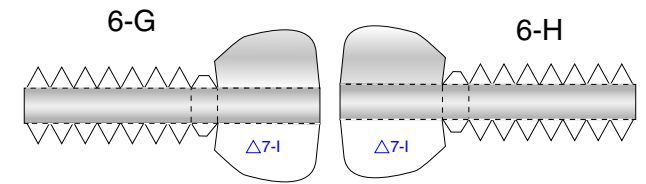
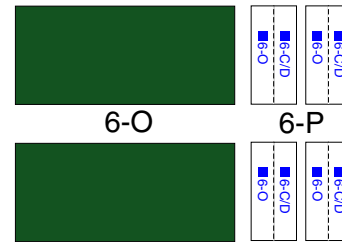
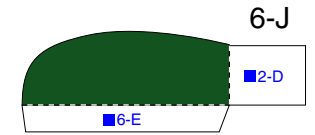
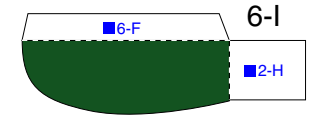
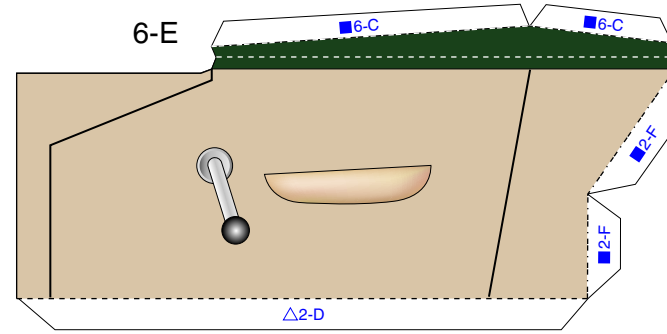
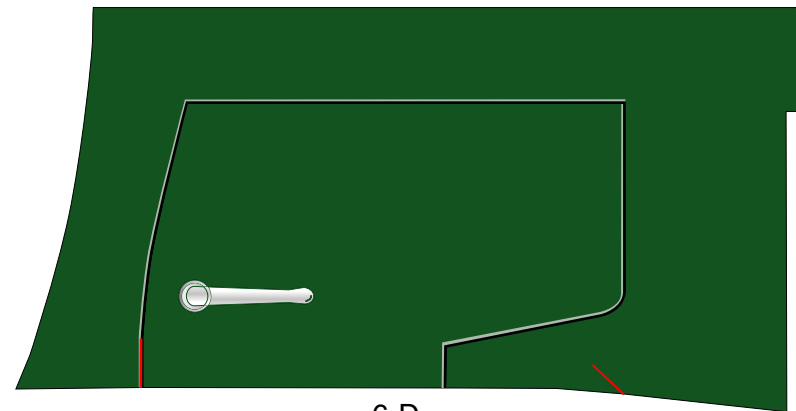
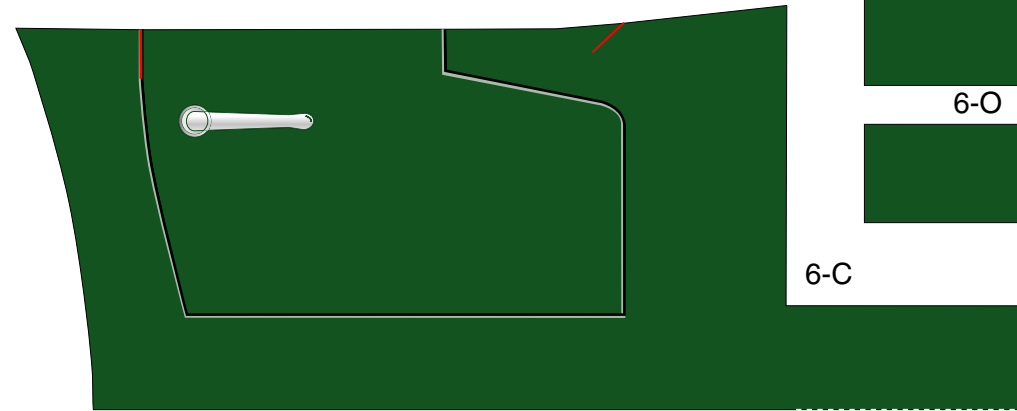
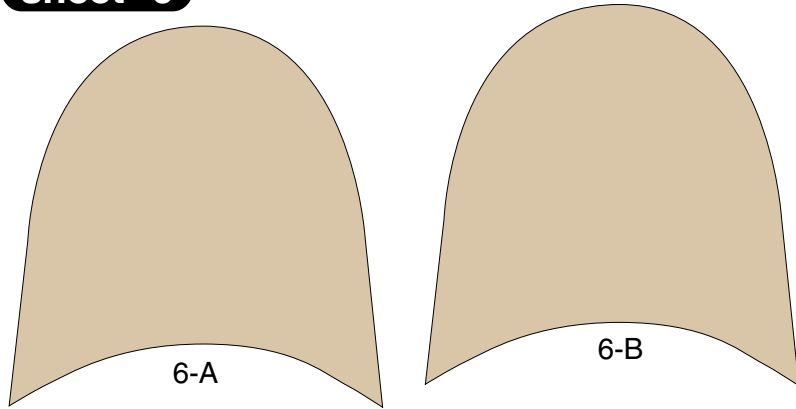


— Scissors line    ..... Mountain fold    - - - - - Valley fold    ——— Cut in Line    Cut out

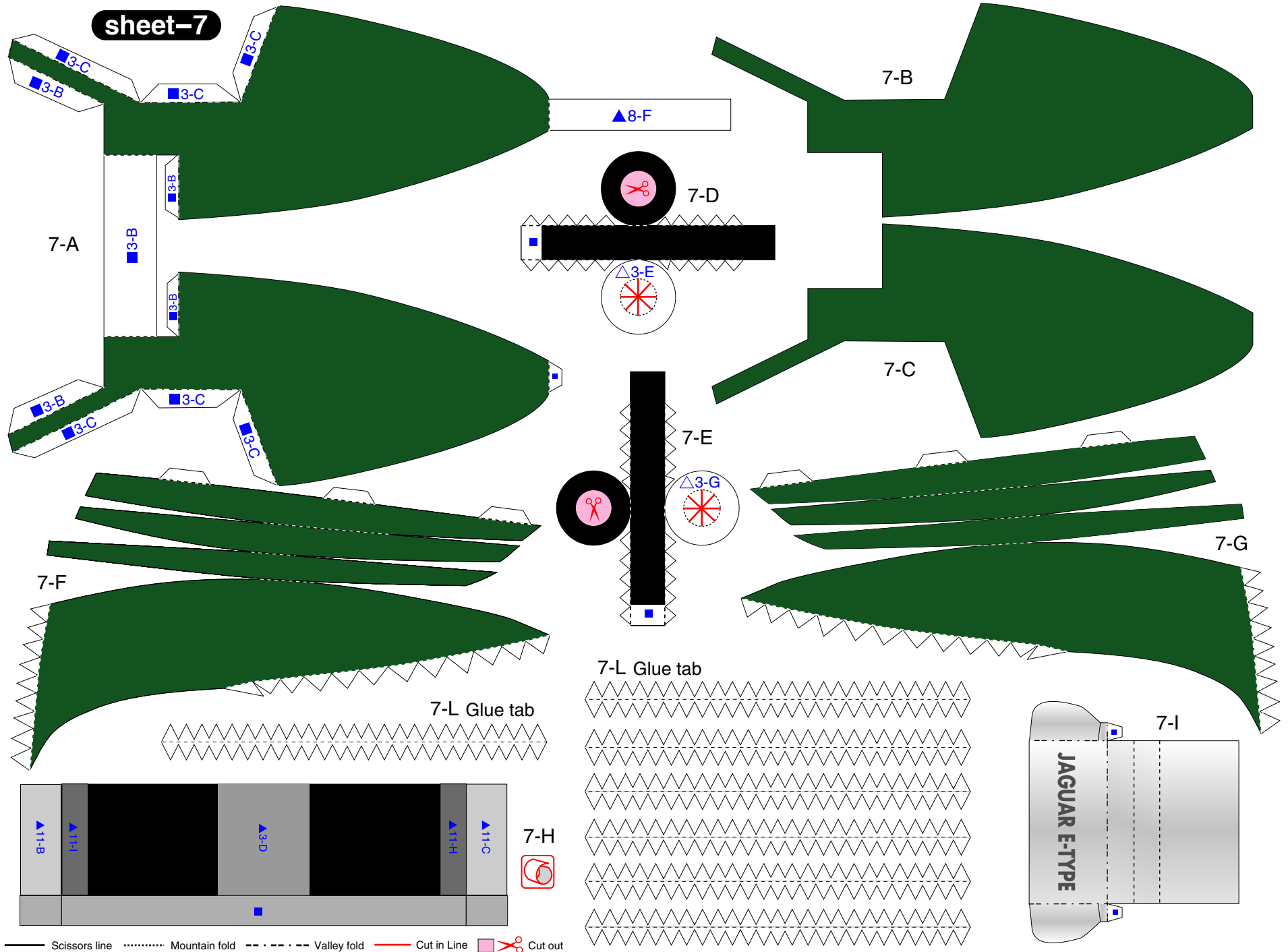
5-N  
Parts for use with overhead projector film

5-G  
Parts for use with overhead projector film

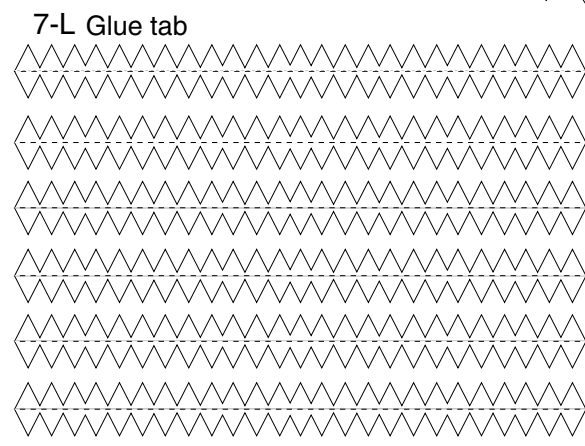
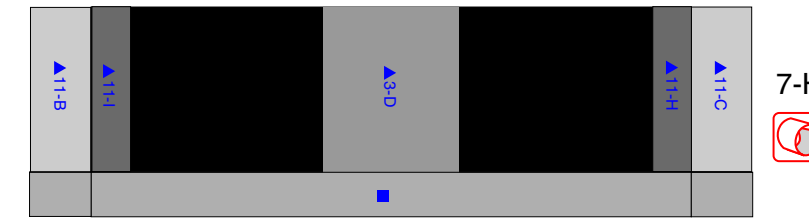
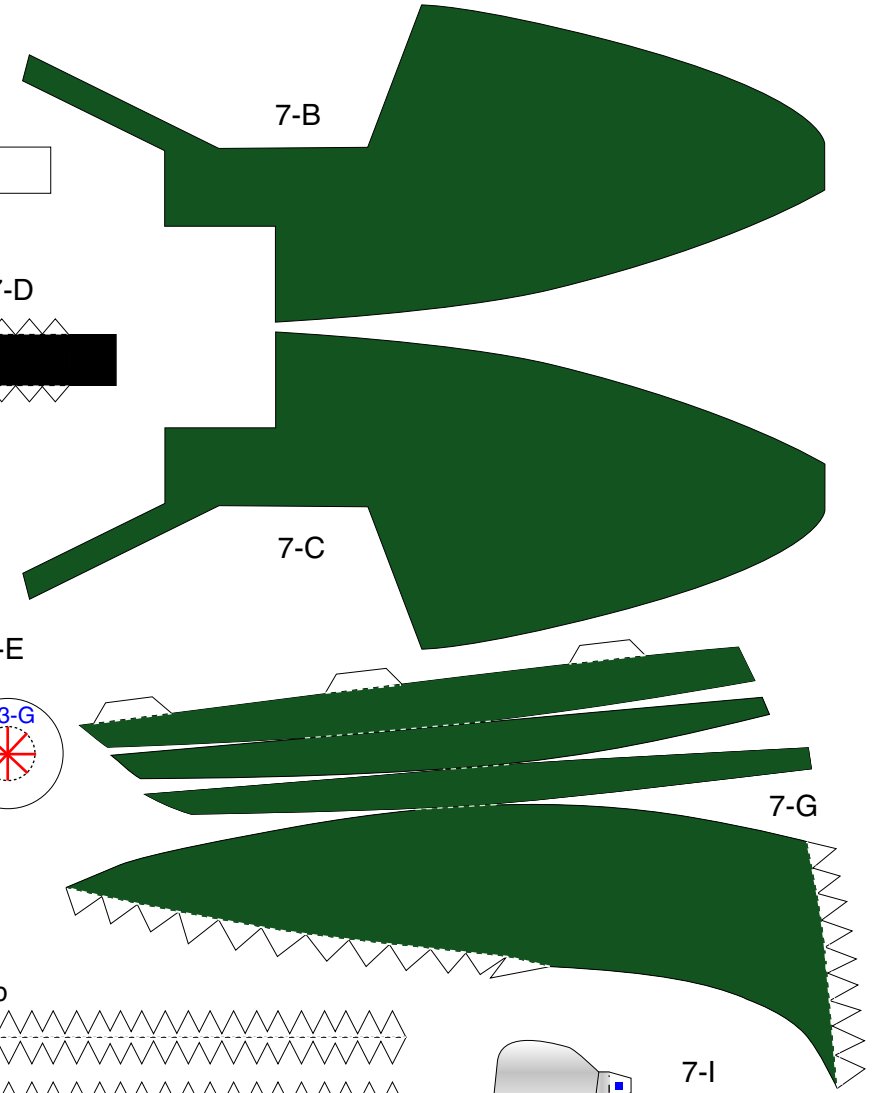
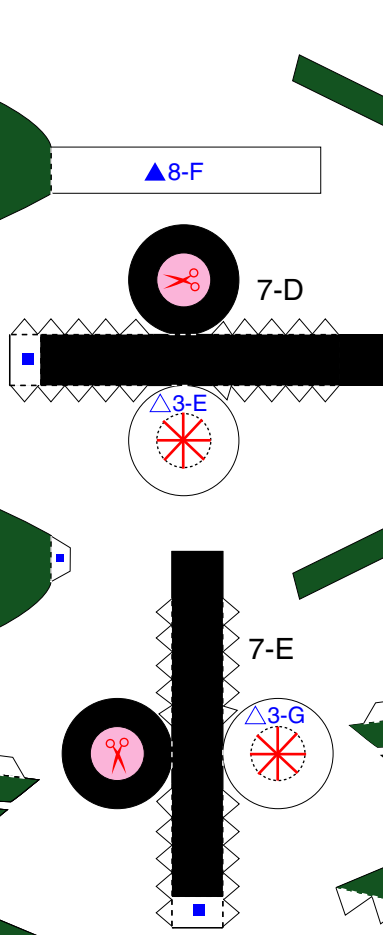
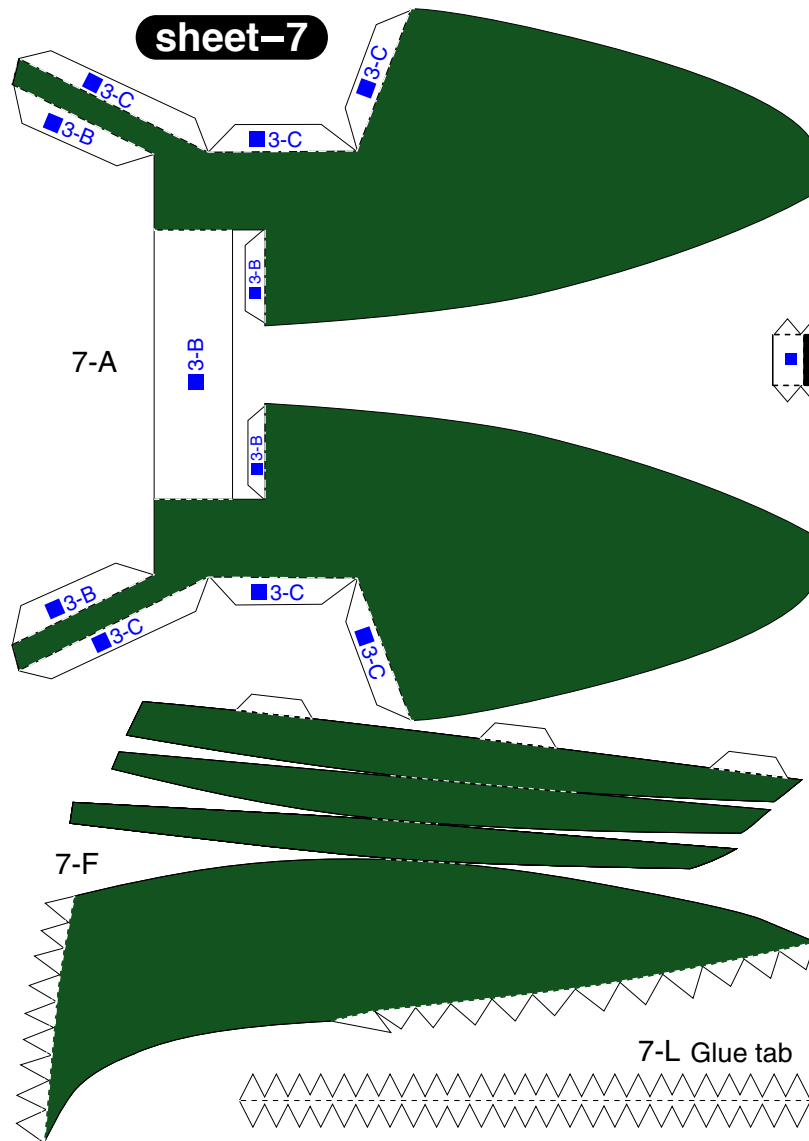
sheet-6



— Scissors line    ..... Mountain fold    - - - - - Valley fold    ——— Cut in Line    ✂ Cut out

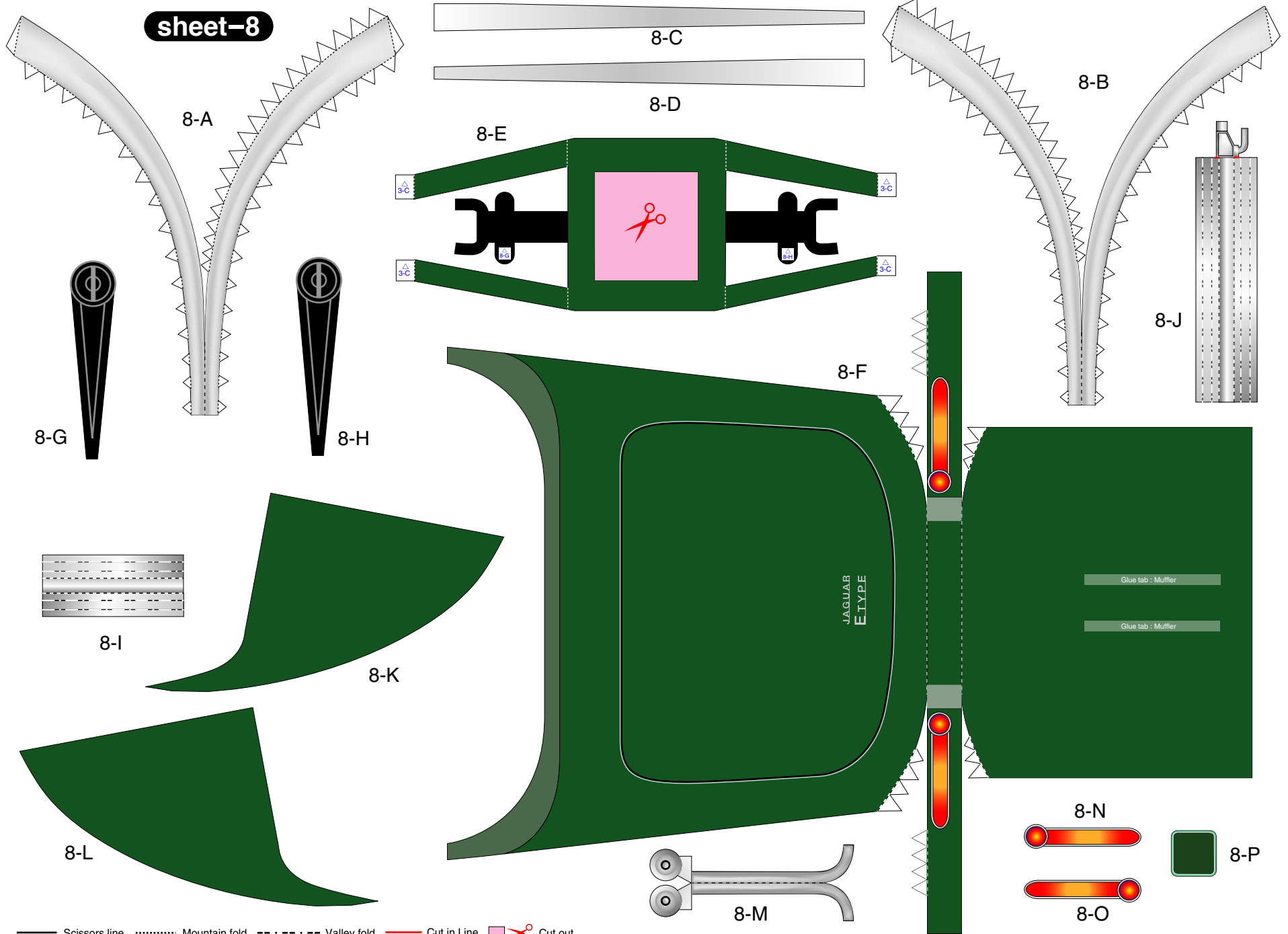


**sheet-7**



— Scissors line    ..... Mountain fold    - - - - - Valley fold    ——— Cut in Line    Cut out

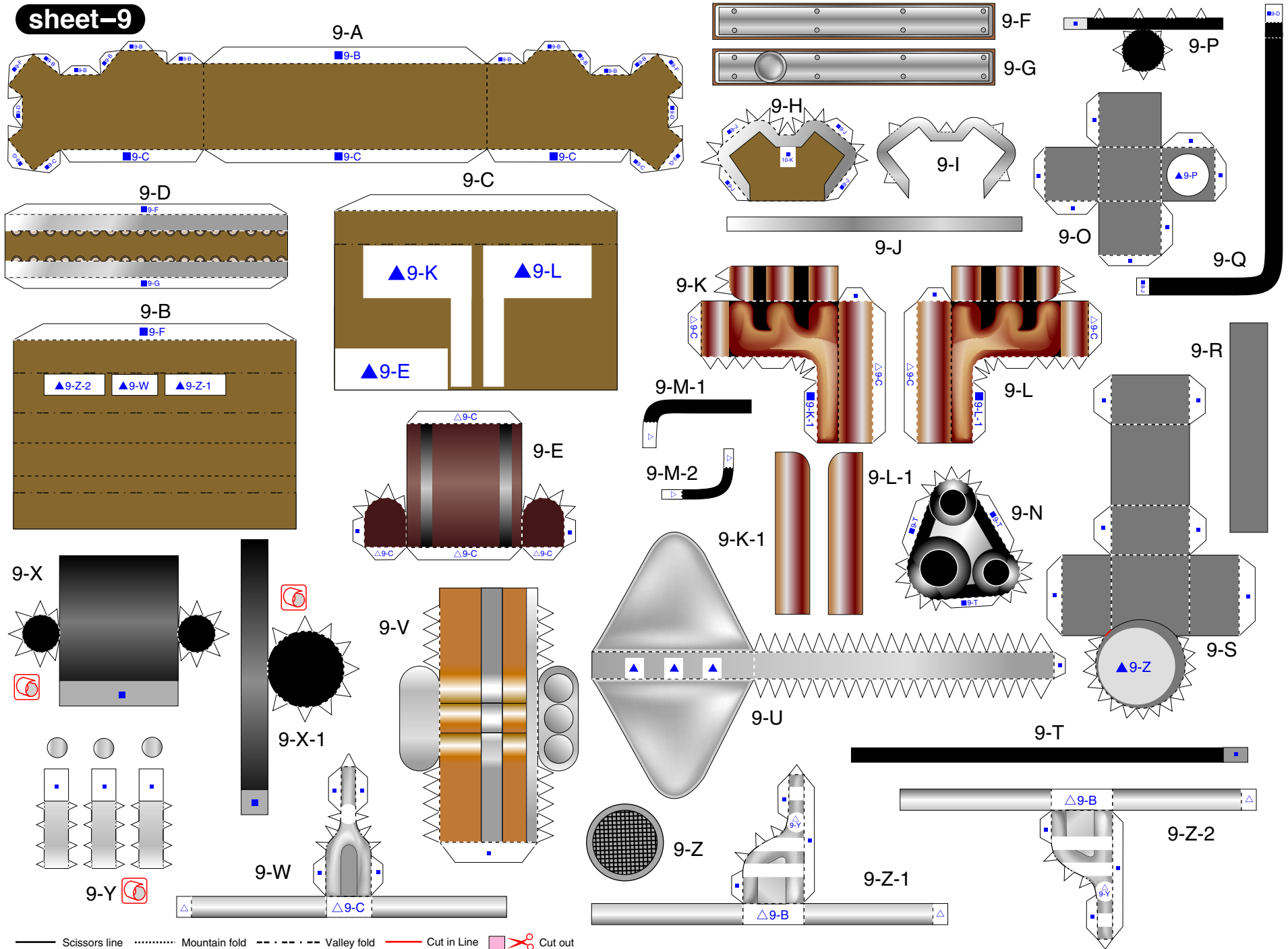
**sheet-8**



Scissors line  
  Mountain fold  
  Valley fold  
  Cut in Line  
  Cut out

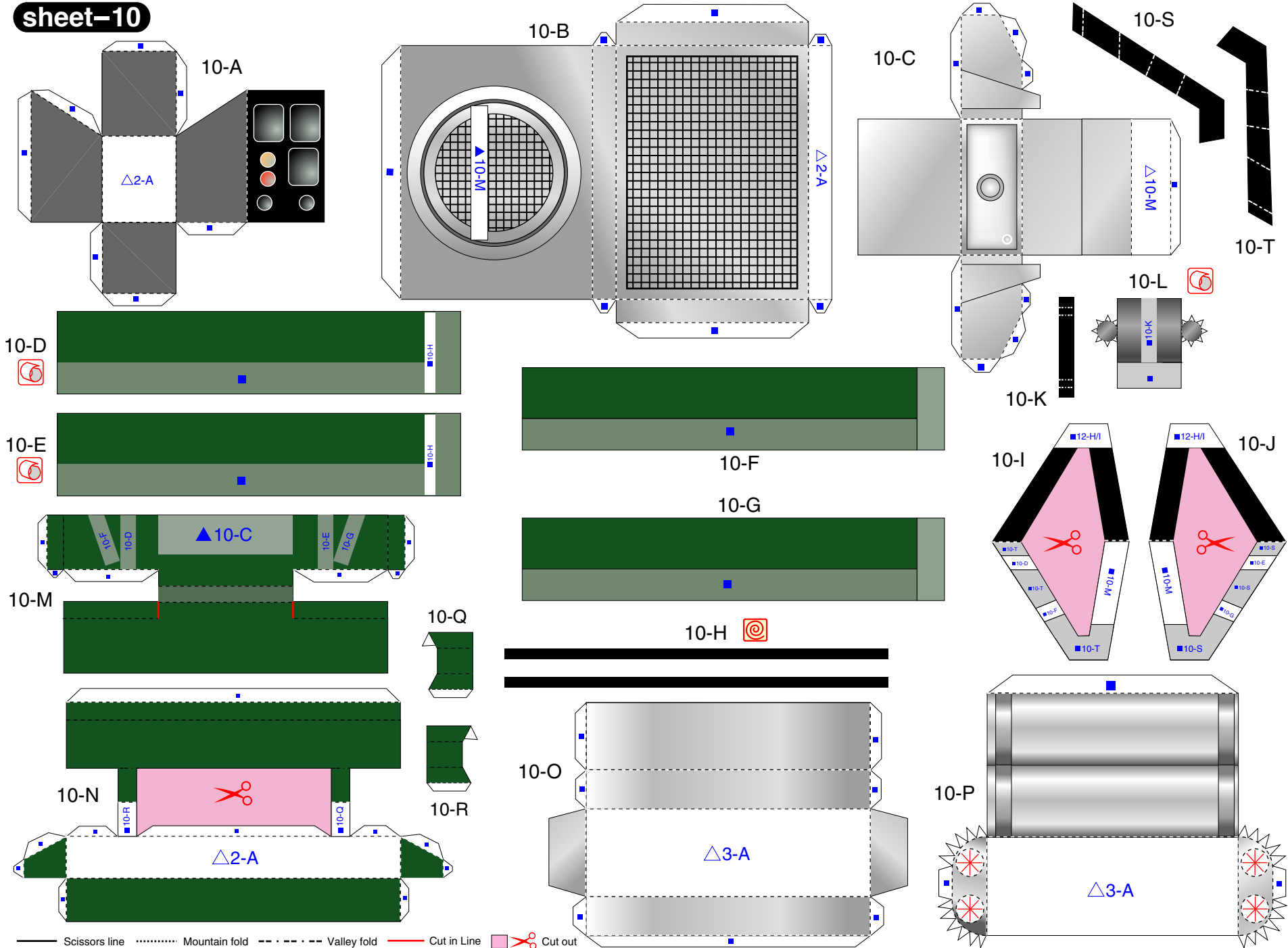


## sheet-9



Scissors line  
  Mountain fold  
  Valley fold  
  Cut in Line  
  Cut out

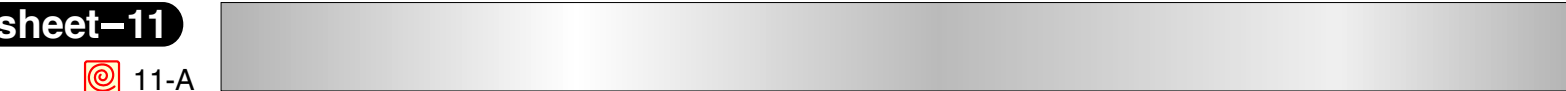
sheet-10



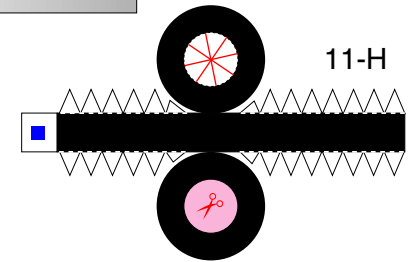
— Scissors line    ..... Mountain fold    - - - - Valley fold    — Cut in Line    Cut out

**sheet-11**

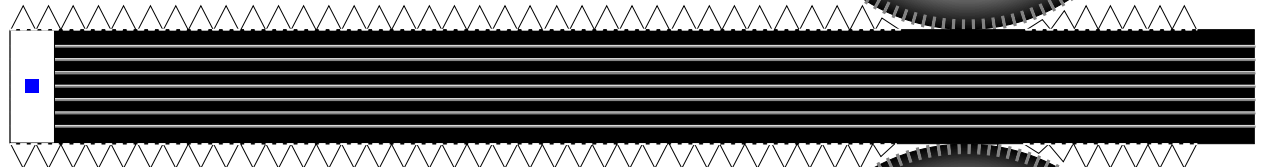
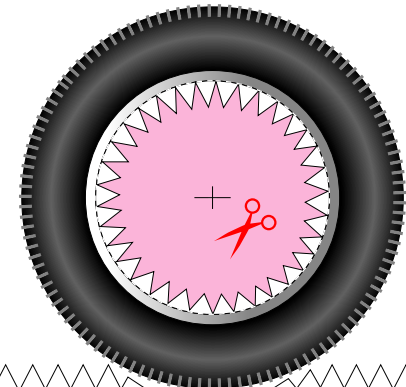
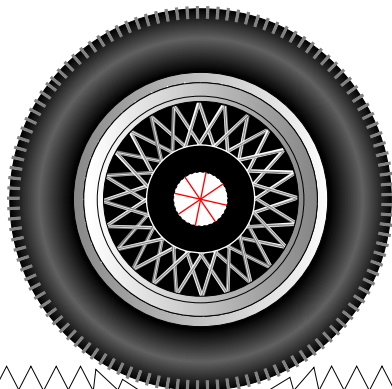
11-A



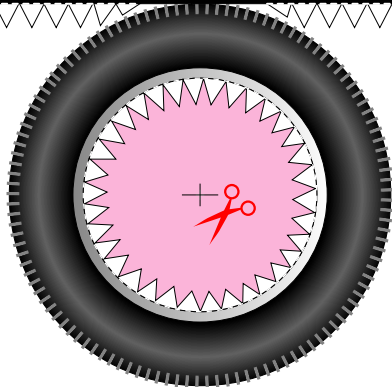
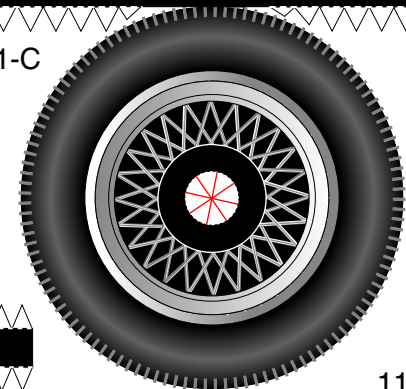
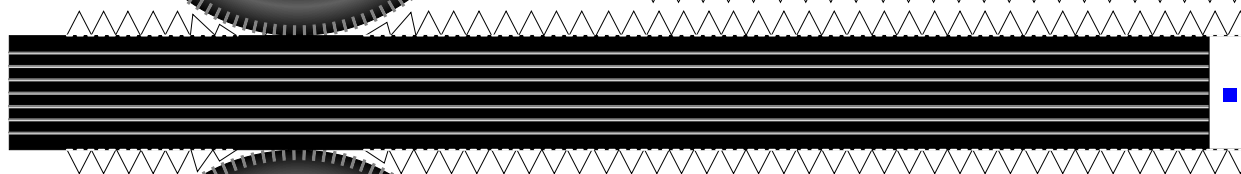
11-D



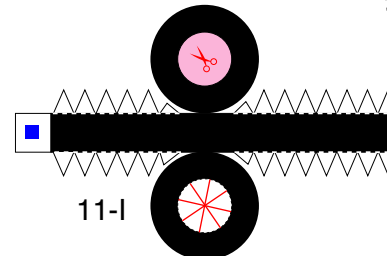
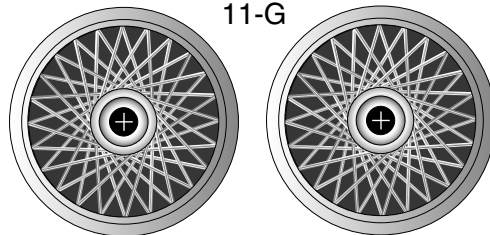
11-B



11-C

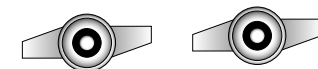
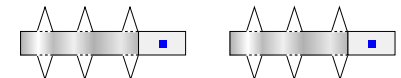


11-G



11-I

11-F

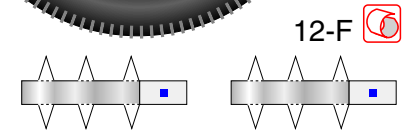
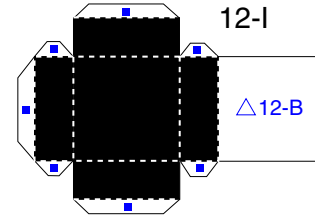
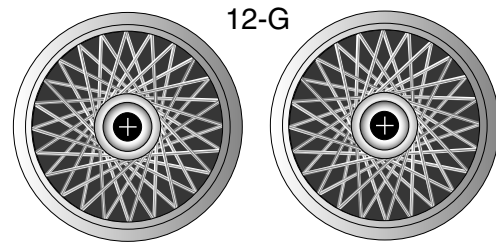
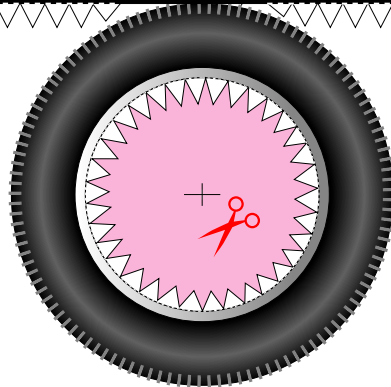
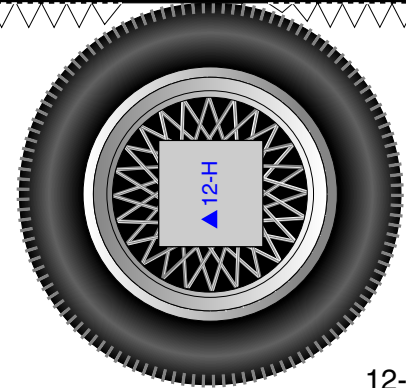
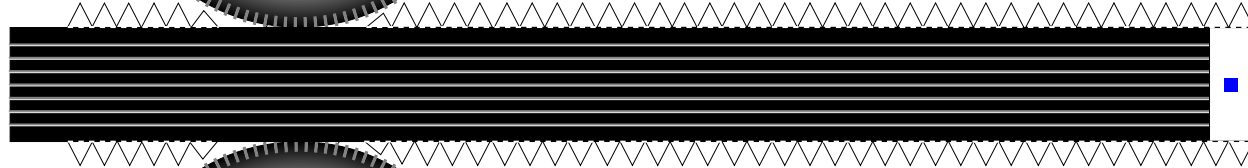
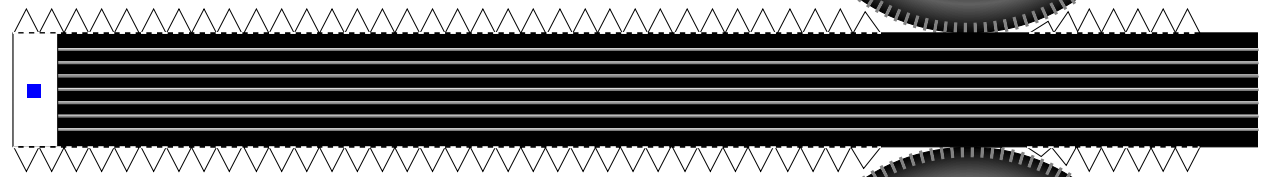
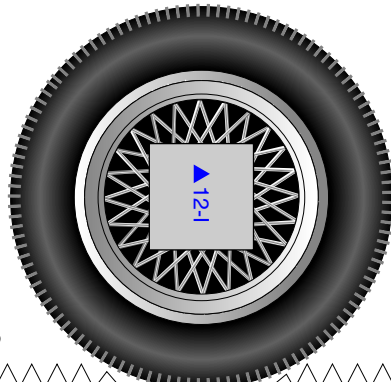
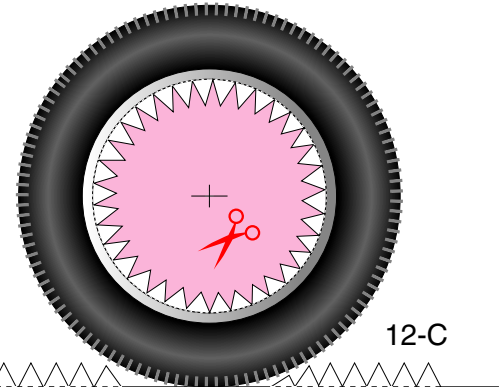
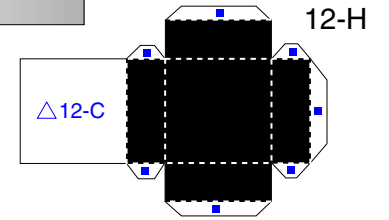


11-E

— Scissors line    ..... Mountain fold    - - - - - Valley fold    ——— Cut in Line    Cut out

**sheet-12**

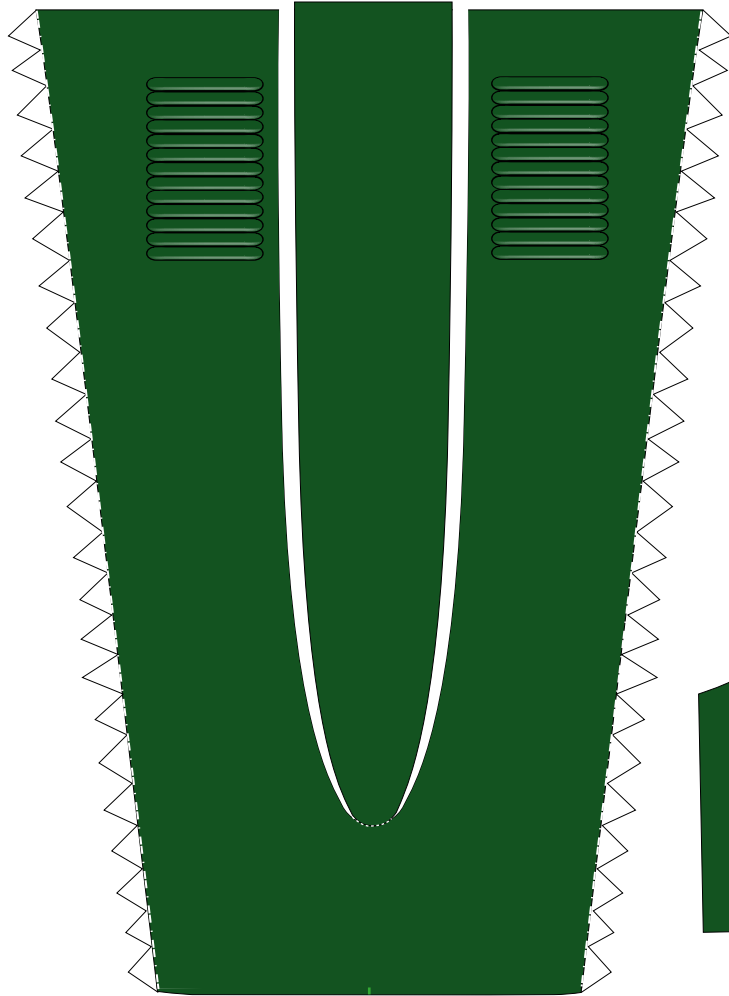
12-A



— Scissors line    ····· Mountain fold    - - - - - Valley fold    — Cut in Line    Cut out

sheet-13

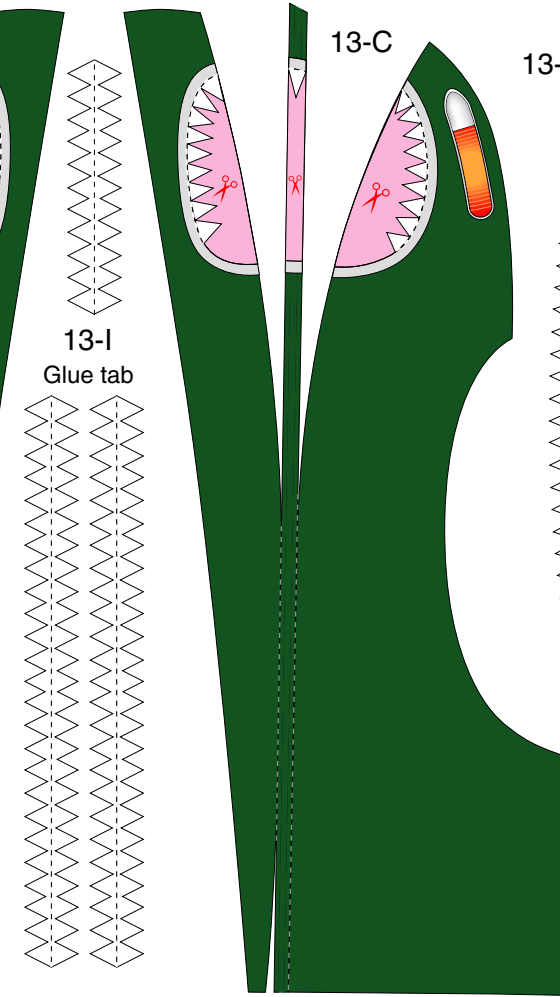
13-A



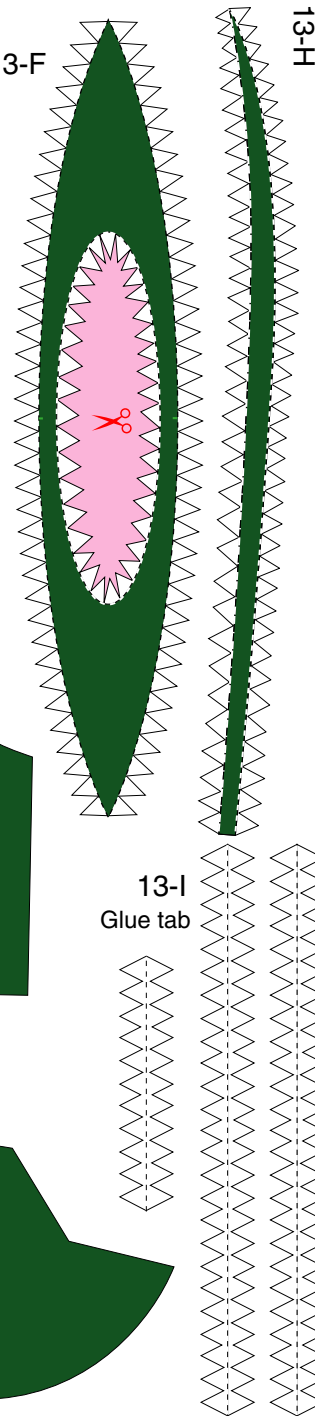
13-B



13-C

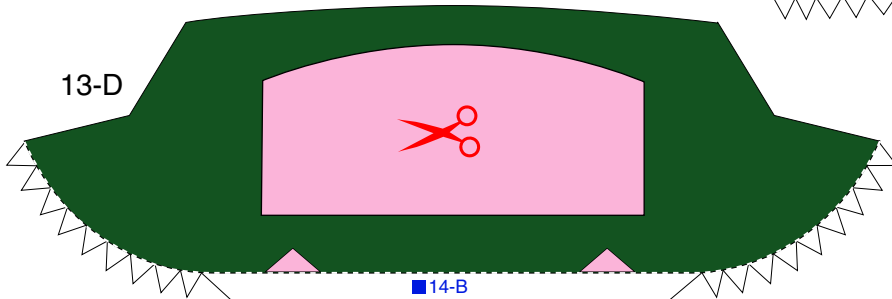


13-F

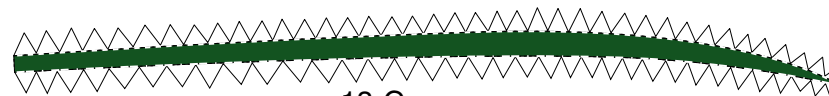


13-H

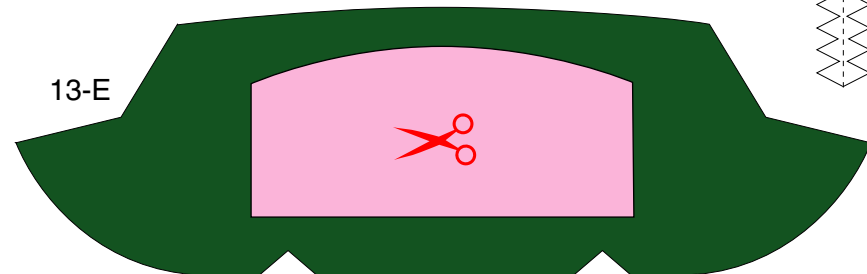
13-D



13-G

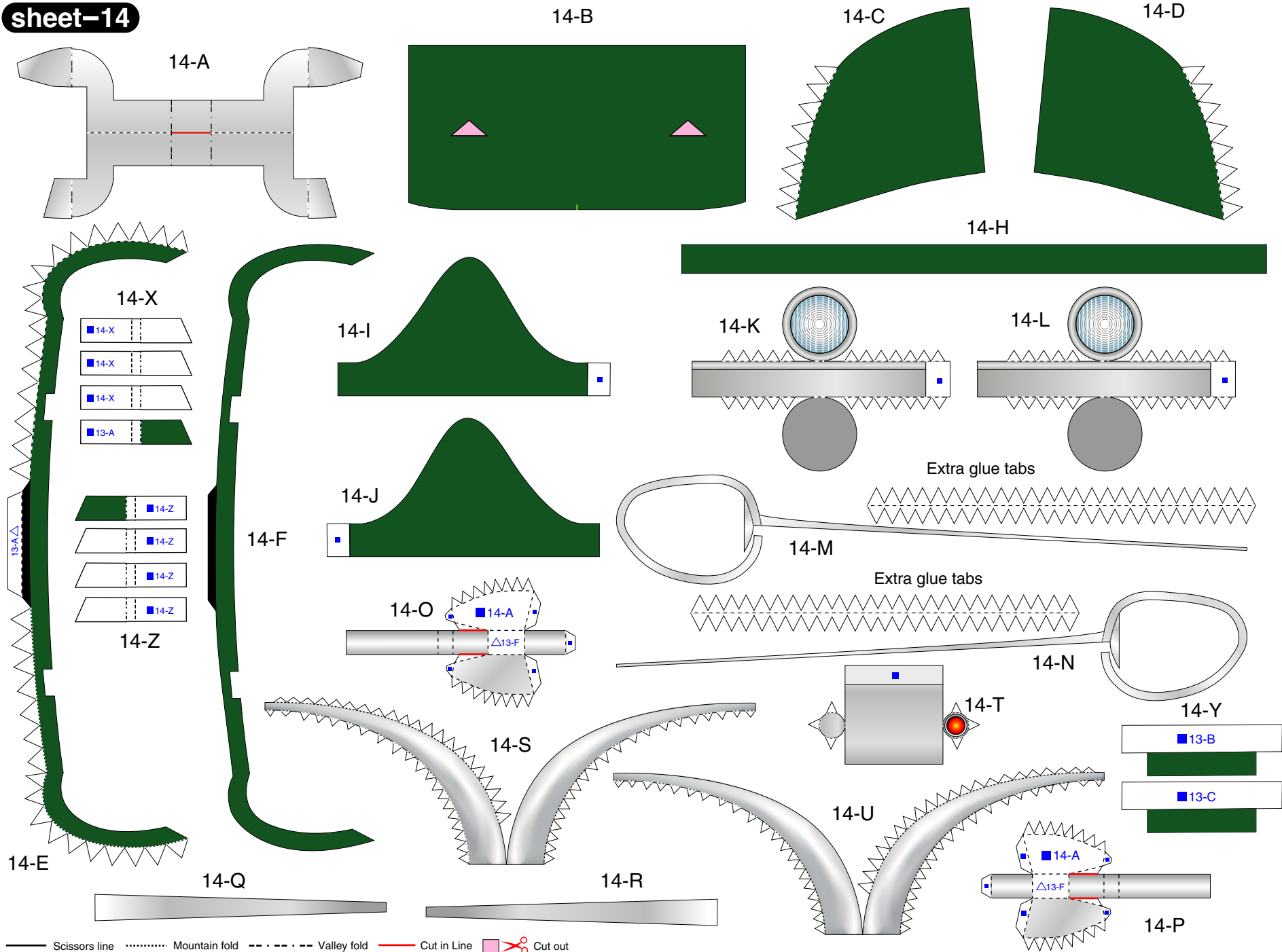


13-E



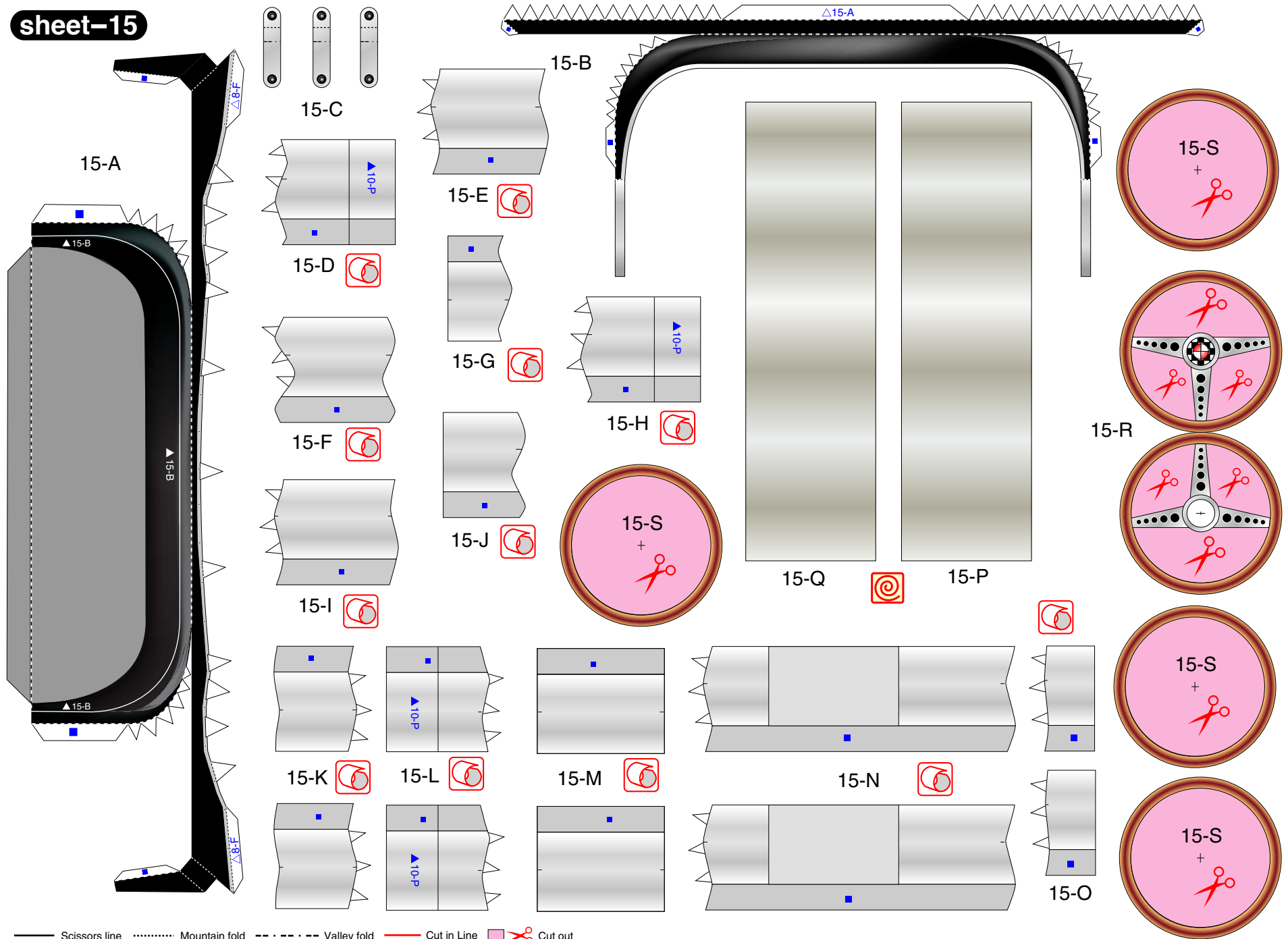
— Scissors line    ..... Mountain fold    - - - - - Valley fold    — Cut in Line    ■ Cut out

**sheet-14**



— Scissors line    ..... Mountain fold    - - - - - Valley fold    ——— Cut in Line    ✂ Cut out

sheet-15



— Scissors line    ..... Mountain fold    - - - - - Valley fold    ——— Cut in Line    ◻✂ Cut out